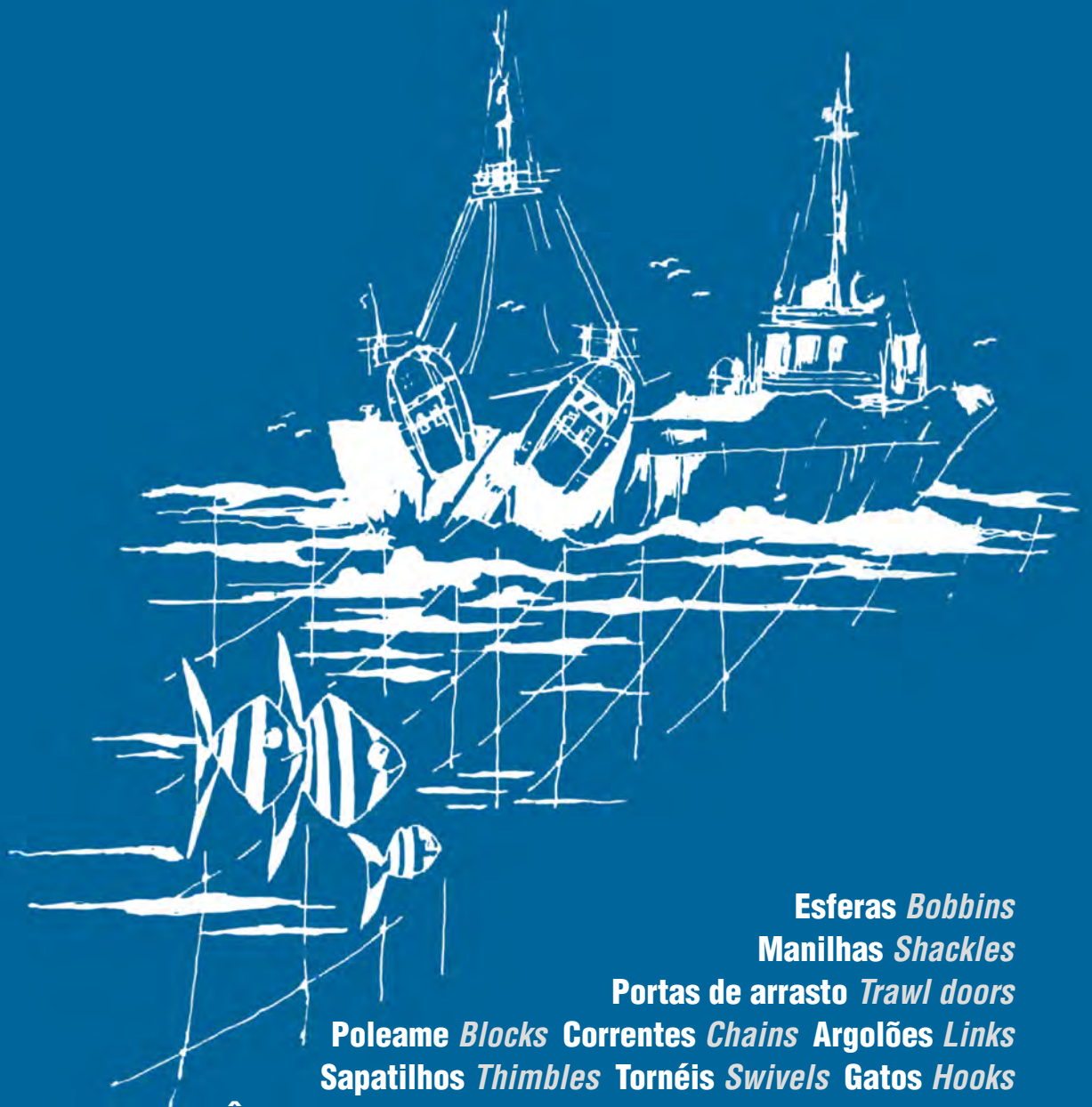


SOUNETE

EQUIPAMENTOS PARA PESCA INDUSTRIAL
TRAWL FISHING HARDWARE AND GEAR



Esferas *Bobbins*
Manilhas *Shackles*
Portas de arrasto *Trawl doors*
Poleame *Blocks* Correntes *Chains* Argolões *Links*
Sapatilhos *Thimbles* Tornéis *Swivels* Gatos *Hooks*
Âncoras *Anchoring* Aprestos de aço alloy *Alloy steel gear*
Equipamentos para aquicultura *Aquaculture equipment*
Equipamentos especiais *Special equipments*

Sapatilhos, tornéis, gatos e elos/argolões *Thimbles, swivels, hooks and links*

Pg.50-60

SOUNETE
Internacional, S.A.

Rua da Seara 588
Oliveira do Douro
V.N.Gaia
Portugal

NIPC
513 830 375

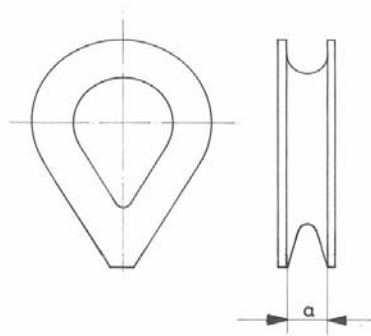
TEL / FAX
+351 227 860 930
+351 227 860 935

POST
Apartado 290
4431 -904 V.N.Gaia
Portugal

EMAIL
sounete@sounete.pt

URL
www.sounete.pt

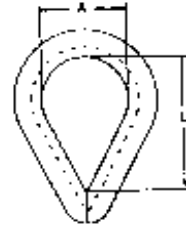
SAB - SAPATILHO DE BICO REFORÇADO PARA CABO DE AÇO
 REINFORCED HEART SHAPE THIMBLE FOR STEEL WIRE ROPE



REFERENCIA REFERENCE	CABO AÇO / WIRE ROPE		PESO WEIGHT Kgs
	Diameter mm	Perimeter Inches	
SAB04	4	1/2	0,015
SAB06	6	3/4	0,035
SAB08	8	1	0,068
SAB10	10	1.1/4	0,068
SAB12	12	1.1/2	0,230
SAB14	14	1.3/4	0,230
SAB16	16	2	0,280
SAB18	18	2.1/4	0,310
SAB20	20	2.1/2	0,615
SAB22	22	2.3/4	0,615
SAB24	24	3	0,615
SAB26	26	3.1/4	0,810
SAB28	28	3.1/2	1,330
SAB30	30	3.3/4	1,425
SAB32	32	4	1,530
SAB34	34	4.1/4	1,800
SAB36	36	4.1/2	2,000
SAB38	38	4.3/4	2,230
SAB40	40	5	3,000
SAB44	44	5.1/2	3,710
SAB48	48	6	5,000
SAB50	50	6.1/4	6,200
SAB52	52	6.1/2	7,000

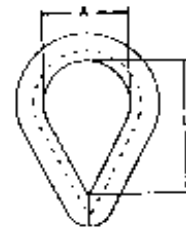
> Aprestos de dimensões maiores disponíveis sob consulta
 > Larger sizes available on request

SBD - SAPATILHOS DE BICO DIN 6899 B - GALVANIZADOS
GALVANISED DIN 6899 B THIMBLES



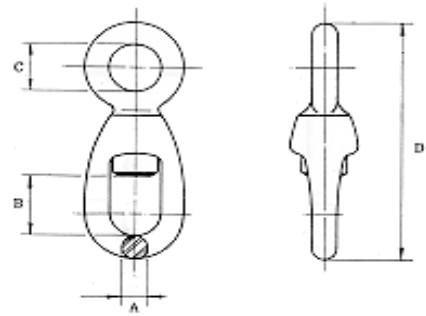
REFERÊNCIA Reference	PARA CABO For cable Ø mm	DIMENSÕES (mm) Dimensions (mm)		PESO Weight Kgs. 100 Un.
		A	L	
SBD03	3	12	19	0,500
SBD04	4	13	21	0,800
SBD05	5	14	23	1,000
SBD06	6	16	25	1,600
SBD07	7	18	28	1,900
SBD08	8	20	32	3,000
SBD10	10	24	38	4,700
SBD12	12	28	45	6,800
SBD14	14	32	51	10,000
SBD16	16	36	58	14,500
SBD18	18	40	64	19,000
SBD20	20	45	72	29,000
SBD22	22	50	80	32,000
SBD24	24	56	90	50,000
SBD26	26	62	99	59,000
SBD28	28	70	112	82,000
SBD30	30	75	120	100,000
SBD32	32	80	128	130,000
SBD34	34	95	152	160,000

SBC - SAPATILHOS DE BICO MODELO COMERCIAL - GALVANIZADOS
GALVANISED COMMERCIAL THIMBLES



REFERÊNCIA Reference	PARA CABO For cable Ø mm	DIMENSÕES (mm) Dimensions (mm)		PESO Weight Kgs. 100 Un.
		A	L	
SBC04	4	11	16	0,400
SBC05	5	16	22	0,800
SBC06	6	19	25	1,400
SBC07	7	22	32	2,000
SBC08	8	24	34	2,800
SBC09	9	29	38	3,000
SBC10	10	32	42	4,800
SBC11	11	35	48	7,500
SBC12	12	38	51	8,000
SBC14	14	40	57	10,000
SBC16	16	42	60	15,000
SBC18	18	45	67	22,000
SBC20	20	51	76	25,000
SBC22	22	54	83	32,000
SBC24	24	64	88	46,000
SBC26	26	68	102	66,000
SBC28	28	73	110	77,000

TAR - TORNEL DE ALTA RESISTÊNCIA - LINHA AZUL
HIGH TENSILE SWIVEL - BLUE LINE



REFERÊNCIA REFERENCE	DIMENSÕES (mm) DIMENSIONS (mm)				S.W.L. Kgs.	PESO WEIGHT Kgs.
	A	B	C	D		
TAR12LA	12	33	25	138	2.000	0,450
TAR16LA	16	41	30	165	3.250	0,720
TAR20LA	20	50	37	204	4.750	1,290
TAR22LA	22	54	40	222	6.500	2,270
TAR25LA	25	60	44	248	8.500	3.300
TAR28LA	28	65	48	273	9.500	4,100
TAR32LA	32	72	54	312	12.000	6,600
TAR40LA	40	82	63	375	17.000	12,310

MATERIAL: - AÇO DE ALTA DUCTILIDADE - TEMPERADO E REVENIDO.

FACTOR DE SEGURANÇA: - 5 x CARGA DE TRABALHO - RESISTÊNCIA DE ROTURA MÍNIMA.

ACABAMENTO: - PINTADO.

MATERIAL: - HIGH TENSILE STEEL QUENCHED AND TEMPERED.

SAFETY FACTOR: - 5 TIMES SWL - MINIMUM BREAKING LOAD.

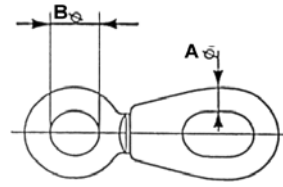
FINISH: - PAINTED

TNI - TORNEL NORMAL - GALVANIZADO
NORMAL SWIVEL - GALVANISED



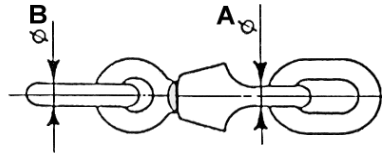
REFERÊNCIA REFERENCE	DIAMETRO DIAMETER mm	ALTURA HEIGHT mm	S.W.L. Kgs.	PESO WEIGHT Kgs.
TNI06G	6	55	70	0,040
TNI08G	8	85	140	0,080
TNI10G	10	100	250	0,180
TNI11G	11	120	300	0,300
TNI13G	13	130	400	0,400
TNI14G	14	155	700	0,550
TNI16G	16	180	1.200	0,800
TNI20G	20	200	2.000	1,500
TNI22G	22	240	2.500	3,000
TNI25G	25	280	3.150	3,100

TC - TORNEL DE CAIXA
STRONG SWIVELS



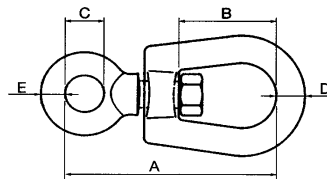
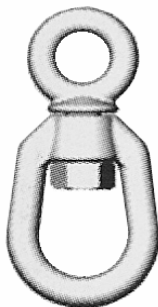
REFERÊNCIA REFERENCE	DIMENSÕES (mm) DIMENSIONS (mm)		SWL KGS	PESO WEIGHT Kgs.
	A	B		
TC28	28	50	8.500	4,600
TC32	32	52	10.000	7,000
TC40	40	60	13.500	14,000
TC50	50	70	15.000	21,000

TCE - TORNEL DE CAIXA COM ELOS
STRONG SWIVELS WITH LINKS



REFERÊNCIA REFERENCE	DIMENSÕES (mm) DIMENSIONS (mm)		SWL KGS	PESO WEIGHT Kgs.
	A	B		
TCE28	28	28	8.500	7,800
TCE32	32	32	10.000	12,200
TCE40	40	40	13.500	23,000
TCE50	50	45	15.000	34,000

TCI - TORNEL COMERCIAL - GALVANIZADO A QUENTE
COMMERCIAL SWIVEL - HOT DIP GALVANISED

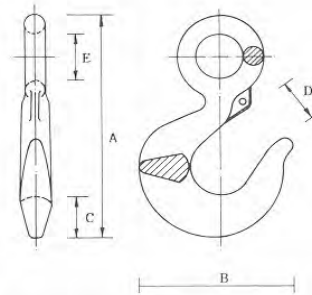


REFERÊNCIA REFERENCE	DIMENSÕES (mm) DIMENSIONS (mm)					S.W.L. Kgs.	PESO Weight Kgs.
	D	A	B	C	E		
TCI06G	6	58	25	11	6,5	75	0,064
TCI08G	8	70	30	12	7,5	150	0,120
TCI10G	10	87	37	18	8,5	200	0,225
TCI12G	12	105	50	21	12	250	0,457
TCI16G	16	127	60	26	14	380	0,732
TCI20G	20	145	67	32	17	540	1,200

G U O - GATO UNIVERSAL COM OLHAL
UNIVERSAL EYE HOOK



G U O

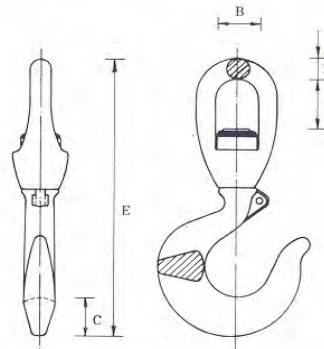


REFERÊNCIA REFERENCE	S. W. L. KGS.	DIMENSÕES (MM) DIMENSIONS (MM)					PESO WEIGHT KGS.
		A	B	C	D	E	
GUO00750	750	110	73	19	24	19	0,230
GUO01000	1.000	125	81	21	26	23	0,360
GUO01500	1.500	141	92	25	27	28	0,500
GUO02000	2.000	163	104	28	31	32	0,770
GUO03000	3.000	201	125	36	38	40	1,630
GUO05000	5.000	256	165	46	48	51	3,040
GUO07500	7.500	316	192	57	57	62	5,900
GUO10000	10.000	354	221	66	66	72	8,400
GUO15000	15.000	434	279	76	76	89	15,300

G U T - GATO UNIVERSAL COM TORNEL GIRATÓRIO
UNIVERSAL SWIVEL HOOK



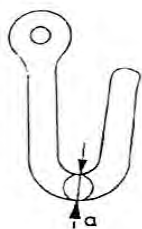
G U T



REFERÊNCIA REFERENCE	S. W. L. KGS.	DIMENSÕES (MM) DIMENSIONS (MM)					PESO WEIGHT KGS.
		A	B	C	D	E	
GUT00750	750	33	29	19	13	132	0,600
GUT01000	1.000	33	29	21	13	140	0,700
GUT01500	1.500	41	32	25	16	155	1,000
GUT02000	2.000	50	40	28	20	185	1,700
GUT03000	3.000	54	43	36	22	210	3,100
GUT05000	5.000	60	47	46	25	250	4,750
GUT07500	7.500	64	52	57	28	290	8,000
GUT10000	10.000	72	62	66	32	320	11,250
GUT15000	15.000	82	75	76	40	390	21,000

ESTES GATOS PODERÃO SER FORNECIDOS COM PATILHA DE SEGURANÇA
THESE HOOKS MAY BE AVAILABLE WITH SAFETY LATCH ASSEMBLED.

GA - GATO DOS AROS
EYE HOOK



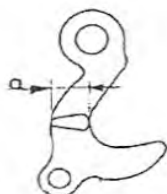
REFERÊNCIA REFERENCE	DIAMETRO DIAMETER	MODELO MODEL	PESO WEIGHT KGS
GA32	32	PEQUENO	3,200
GA35	35	MÉDIO	4,000
GA40	40	GRANDE	4,700

GB0 - GATO DO BOX
HOOK



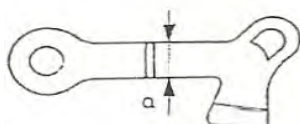
REFERÊNCIA REFERENCE	DIAMETRO DIAMETER	MODELO MODEL	PESO WEIGHT KGS
GB032	32	PEQUENO	2,700
GB040	40	MÉDIO	2,810
GB045	45	GRANDE	3,520

GEU - GATO DE ESCAPE UNIVERSAL
UNIVERSAL SLIP HOOK



REFERÊNCIA REFERENCE	DIAMETRO DIAMETER	MODELO MODEL	PESO WEIGHT KGS
GEU32	32	PEQUENO	2,700
GEU40	40	MÉDIO	2,810

GED - GATO DE ESCAPE TIPO DIREITO
STRAIGHT SLIP HOOK



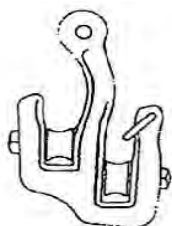
REFERÊNCIA REFERENCE	DIAMETRO DIAMETER	MODELO MODEL	PESO WEIGHT KGS
GED32	32	PEQUENO	1,405
GED40	40	GRANDE	2,420

GM - GATO DA MENSAGEIRA
MESSENGER HOOK



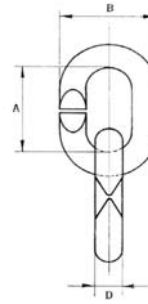
REFERÊNCIA REFERENCE	DIAMETRO DIAMETER	MODELO MODEL	PESO WEIGHT KGS
GED32	32	PEQUENO	1,405
GED40	40	GRANDE	2,420

GMR - GATO DA MENSAGEIRA COM ROLETOS
MESSENGER HOOK WITH ROLLERS



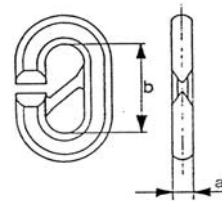
REFERÊNCIA REFERENCE	DIAMETRO DIAMETER	MODELO MODEL	PESO WEIGHT KGS
GMR1		SIMPLES	
GMR2		DUPLO	7,235

EMR - ELOS DE MANOBRA RÁPIDA - LINHA AZUL
SEINE AND QUARTER ROPE LINKS - BLUE LINE



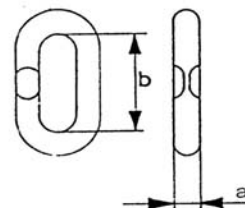
REFERENCIA REFERENCE	DIMENSÕES (mm) DIMENSIONS (mm)			S.W.L. Kgs	PESO WEIGHT KGS
	D	A	B		
EMR16LA	16	60	56	430	0,310
EMR20LA	20	75	68	590	0,600
EMR22LA	22	80	74	720	0,790
EMR25LA	25	90	85	930	1,150
EMR28LA	28	100	96	1.150	1,610
EMR32LA	32	120	109	1.500	2,480

EGRM - ELOS DE GUIA DE MANOBRA RÁPIDA - MACHO
SEINE AND QUARTER ROPE LINKS



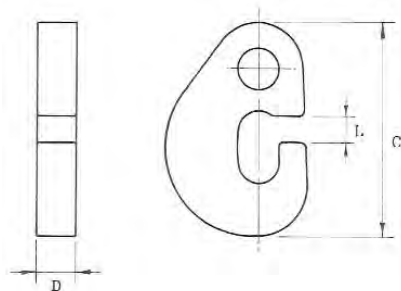
REFERENCIA REFERENCE	DIMENSÕES (mm) DIMENSIONS (mm)		PESO WEIGHT KGS
	A	B	
EGRM22	22	95	1,250
EGRM25	25	100	1,670

EGRF - ELOS DE GUIA DE MANOBRA RÁPIDA - FÊMEA
SEINE AND QUARTER ROPE LINKS



REFERENCIA REFERENCE	DIMENSÕES (mm) DIMENSIONS (mm)		PESO WEIGHT KGS
	A	B	
EGRF20	20	90	0,750
EGRF22	22	90	0,900

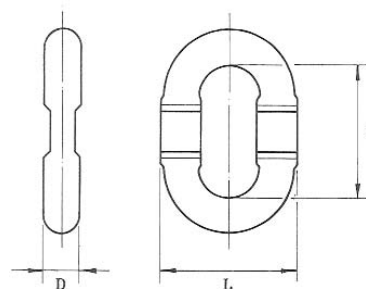
GTG - GATO TIPO "G" ALLOY - LINHA AZUL
ALLOY "G" HOOK - BLUE LINE



GTG

REFERÊNCIA REFERENCE	DIMENSÕES (mm) DIMENSIONS (mm)			S.W.L. Kgs	PESO WEIGHT Kgs
	D	C	L		
GTG12LA	15	88	10	2.000	0,370
GTG16LA	20	125	14	3.250	1,050
GTG20LA	25	125	14	4.750	1,310
GTG22LA	25	163	19	6.500	2,400
GTG25LA	30	163	19	8.500	2,880
GTG28LA	35	205	25	9.500	4,880
GTG32LA	40	205	25	12.000	5,610
GTG35LA	40	245	31	13.500	7,680
GTG40LA	50	245	31	17.000	9,600
GTG45LA	50	275	37	25.000	12,500

AOE - ARGOLÃO OVAIS COM ENCAIXE - LINHA AZUL
SINGLE RECESSED LINK - BLUE LINE



AOE

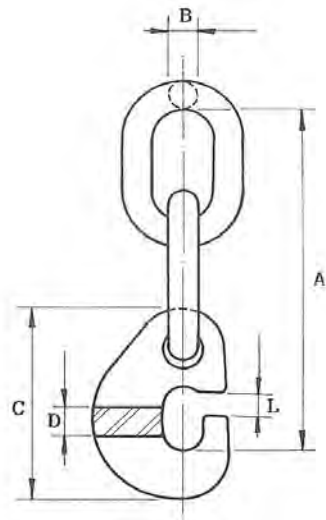
REFERÊNCIA REFERENCE	DIMENSÕES (mm) DIMENSIONS (mm)			S.W.L. Kgs	PESO WEIGHT Kgs
	D	C	L		
AOE12LA	12	55	49	2.000	0,150
AOE16LA	16	70	62	3.250	0,320
AOE20LA	20	90	80	4.750	0,660
AOE22LA	22	100	84	6.500	0,820
AOE25LA	25	110	95	8.500	1,200
AOE28LA	28	125	106	9.500	1,380
AOE32LA	32	145	124	12.000	2,580
AOE35LA	35	160	135	13.500	3,350
AOE40LA	40	180	155	17.000	5,040
AOE45LA	45	200	170	25.000	6,890

CARGA DE ENSAIO = 2 x CARGA DE TRABALHO
CARGA DE ROTURA = 5 x CARGA DE TRABALHO

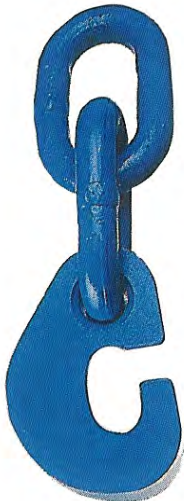
PROF LOAD = 2 x SAFE WORKING LOAD
BREAKING LOAD = 5 x SAFE WORKING LOAD

GTG1 - GATO TIPO "G" ALLOY COM 1 ELO - LINHA AZUL
 ALLOY "G" HOOK WITH 1 LINK - BLUE LINE

GTG2 - GATO TIPO "G" ALLOY COM 2 ELOS - LINHA AZUL
 ALLOY "G" HOOK WITH 2 LINKS - BLUE LINE



GTG1



GTG2

REFERÊNCIA REFERENCE		DIMENSÕES (MM) DIMENSIONS (MM)						S. W. L. KGS.	PESO (KGS) WEIGHT (KGS)	
GTG1	GTG2	D	C	L	A GTG1	A GTG1	B		GTG1	GTG2
GTG12LA1	GTG12LA2	15	88	10	105	155	12	2.000	0,520	0,670
GTG16LA1	GTG16LA2	20	125	14	140	200	16	3.250	1,370	1,690
GTG20LA1	GTG20LA2	25	125	14	160	240	20	4.750	1,970	2,630
GTG22LA1	GTG22LA2	25	163	19	182	262	22	6.500	3,220	4,040
GTG25LA1	GTG25LA2	30	163	19	192	282	25	8.500	4,080	5,280
GTG28LA1	GTG28LA2	35	205	25	230	330	28	9.500	6,260	7,640
GTG32LA1	GTG32LA2	40	205	25	230	370	32	12.000	8,190	10,770
GTG35LA1	GTG35LA2	40	245	31	293	423	35	13.500	11,030	14,380
GTG40LA1	GTG40LA2	50	245	31	313	463	40	17.000	14,640	19,680
GTG45LA1	GTG45LA2	50	275	37	338	498	45	20.000	19,390	26,280

CARGA DE ENSAIO = 2 x CARGA DE TRABALHO
 CARGA DE ROTURA = 5 x CARGA DE TRABALHO

PROOF LOAD = 2 x SAFE WORKING LOAD
 BREAKING LOAD = 5 x SAFE WORKING LOAD

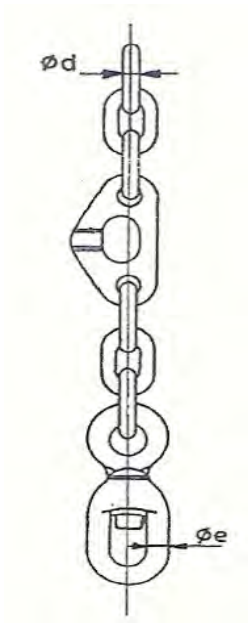


SOUNETE - FÁBRICA DE APRESTOS METÁLICOS, LDA.

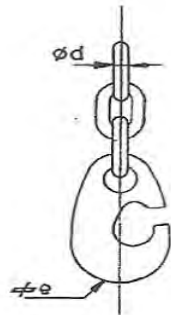
RUA DA SEARA, 588 - OLIVEIRA DO DOURO
 APARTADO, 290 - 4431-904 VILA NOVA DE GAIA - PORTUGAL
 TELEFONES (351) 227860930 - FAX (351) 227860935 - E-mail comercial@sounete.pt - WEB www.sounete.pt

JAF - JOGO AMERICANO - FÊMEA
RECESSED SWIVEL TOWING

JAM - JOGO AMERICANO - MACHO
"G" HOOK WITH THREE LINKS



JAF

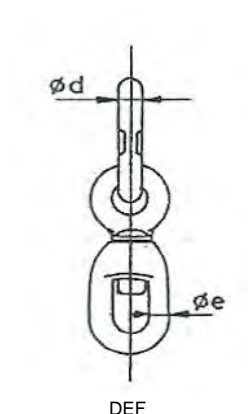


JAM

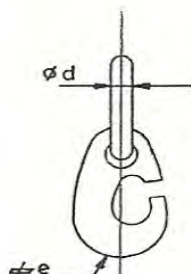
REFERÊNCIA REFERENCE	DIMENSÕES (MM) DIMENSIONS (MM)		PESO WEIGHT KGS
	E	D	
JAF20	20	16	9,700 14,100
JAF22	22	20	
JAF25	25	22	
JAF28	28	25	
JAM20	20	16	5,000
JAM22	22	20	
JAM25	25	22	
JAM28	28	25	

DEF - DISPOSITIVO DE ENGATE - FÊMEA
RECESSED SWIVEL TOWING

DEM - DISPOSITIVO DE ENGATE - MACHO
"G" HOOK WITH ONE LINK



DEF



DEM

REFERÊNCIA REFERENCE	DIMENSÕES (MM) DIMENSIONS (MM)		PESO WEIGHT KGS
	E	D	
DEF28	28	32	7,100 15,700
DEF32	32	35	
DEF40	40	40	
DEM28	35	28	5,000
DEM32	40	32	
DEM40	50	40	

SOUNETE

EQUIPAMENTOS PARA PESCA INDUSTRIAL
TRAWL FISHING GEAR

Sounete Internacional, S.A.

Rua da Seara 588 || Apartado 290 || 4431-904 V.N.Gaia || Portugal

Telf +351 227 860 930 || Email sounete@sounete.pt || www.sounete.pt